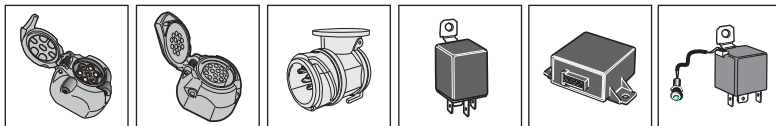
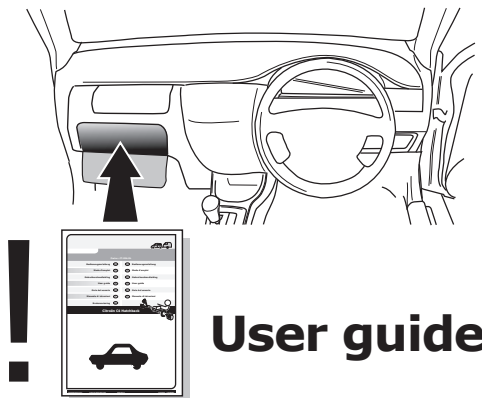


## ! INFO !

Do not charge the battery of the towing vehicle and/or towed vehicle directly via the socket.



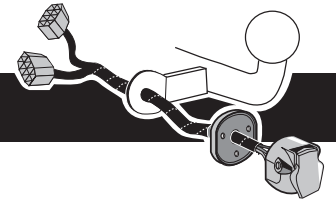
## SPARE PARTS

[www.ecs-electronicsuk.co.uk](http://www.ecs-electronicsuk.co.uk)

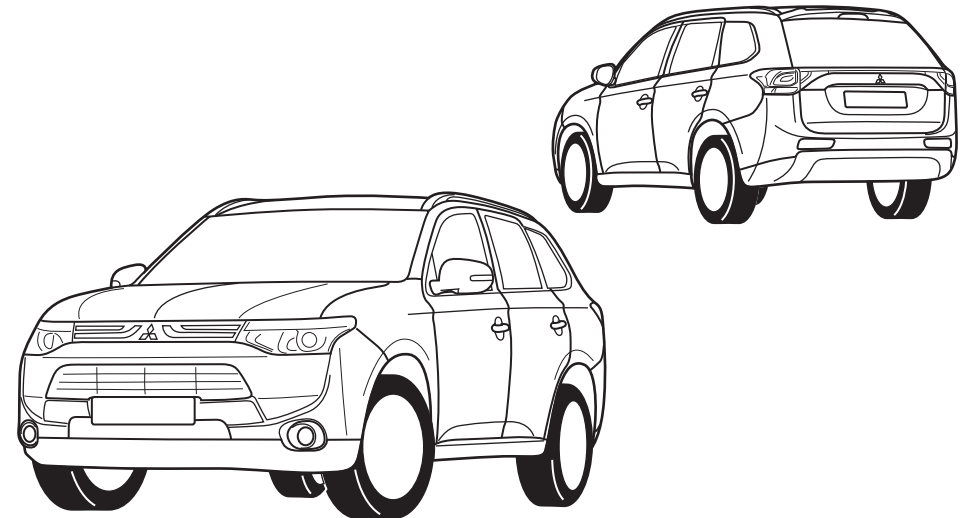


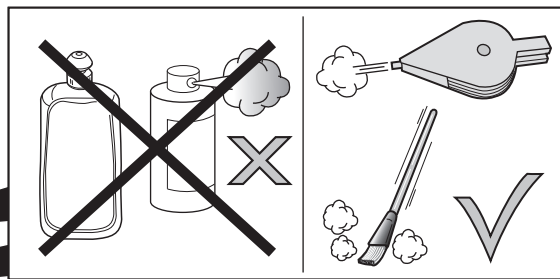
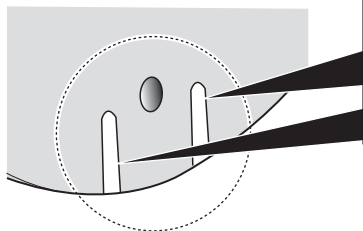
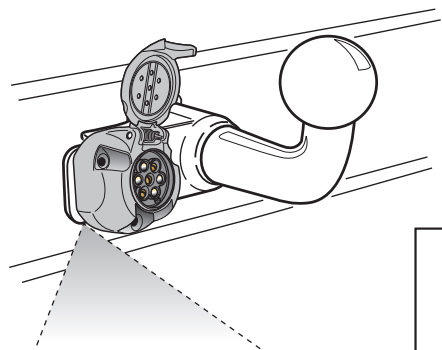
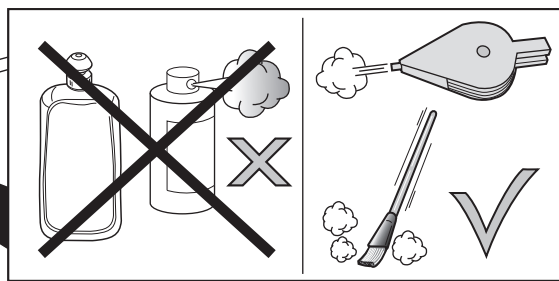
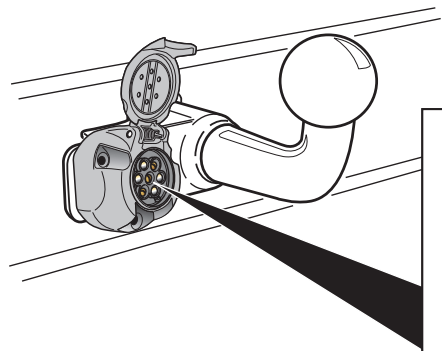
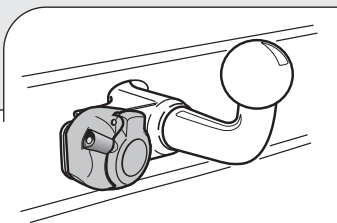
Partnr.: MT-115-BHU

## User Guide



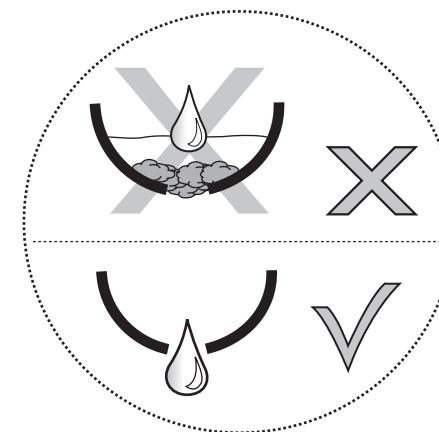
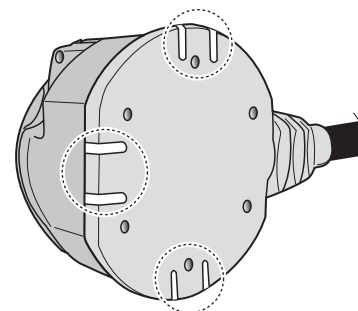
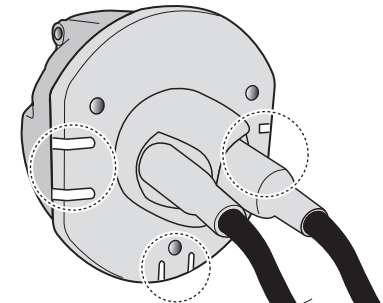
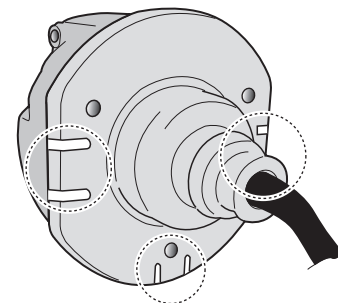
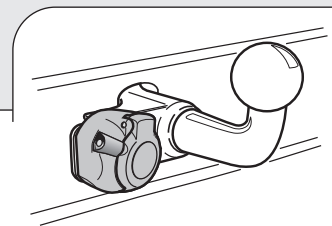
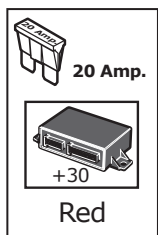
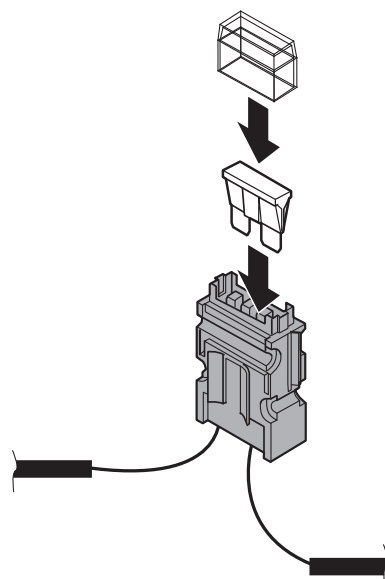
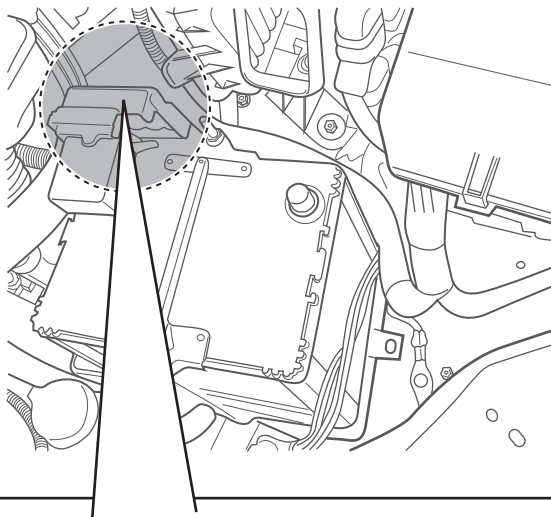
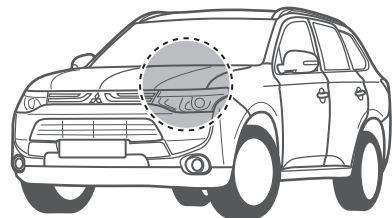
**Mitsubishi Outlander 2013-  
Mitsubishi Outlander PHEV 09/2013-**





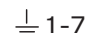



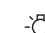


## CHANGING THE FUSE

### Mitsubishi Outlander 2013-



## SOCKET CONNECTION

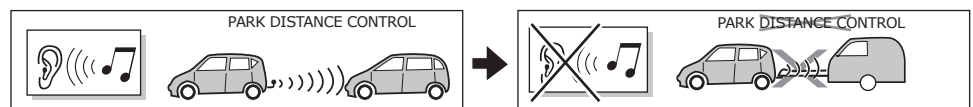
| DIN/ISO<br>1724 |  |  |  |  |  |  |  |
|-----------------|---|---|---|---|---|---|---|
|                 | 1/L   | 2   | 3/31  | 4/R   | 5/58-R  | 6/54  | 7/58-L  |
| Pmax            | 21W   | 2x21W   |   | 21W   | 52W   | 3x21W   | 52W   |
| Colour          | Yellow  | Blue  | White   | Green   | Brown   | Red   | Black   |



In a coupled trailer with working fog lamp, the fog lamp of the vehicle will be switched off, if applicable.



The flashing lights on the trailer are monitored. If one of the indicators of the trailer breaks down, a buzzer will be audible and/or a visual signal will be visible on the dashboard. Check the flashing lights on the trailer.



The wiring kit has a possibility to switch off any Park Distance Control in the case of a coupled trailer.

## CHANGING THE FUSE

### Mitsubishi Outlander PHEV 09/2013-

